



Blending Art and Technology Introducing “Sabal Sentinels”

***A Monumental Sculpture and a State of the Art H.D. Digital Sign
Combined to Create the Best of Both Worlds***

The A.E. Backus Museum is poised to begin a long anticipated expansion.

We have submitted our expansion plans for review by City staff.

City staff and the legal department are currently working on modifications to the Museum’s lease for 2.1 acres of park land.

With the City’s continued collaboration, we plan to break ground on a physical expansion and reimagining in April of 2016. This date is required by our St. Lucie County Tourism Development Grant.

The Museum’s plans include:

- A 2,250 sq. ft. exhibition gallery for the display of the Museum’s collection of A.E. Backus paintings.
- Additional handicapped accessible restroom facilities to comply with current ADA requirements.
- A dedicated exhibition area for the display of paintings by the Florida Highwaymen and to tell their story.
- A fire safety sprinkler system throughout the entire building.
- Exterior Mural Plaza: Featuring seven large murals painted on the Museum’s east and north walls. It will offer unencumbered 24 hour a day public access to fine art and free Wi-Fi for park visitors.
- Covered Entry Court: Featuring four architecturally engineered tensile structures, it will serve as an event venue, outdoor classroom and open-air community gathering place.
- Park Restoration and Reimagining: Create a place for recreation, exploration and conversation by resculpting the flattened topography to mirror the rippling bottom of the lagoon. Install 50,000 sq. ft. of Bahia sod and new native plantings and flowering trees. Create a more visitor friendly environment, drawing visitors into the center of the park and eventually to the Indian River Lagoon.

- Sculpture in the Park: Strategic positioning of sculpture within the park without breaking up the green space or inhibiting recreational use.

Site Plan Showing Museum Expansion



Perspective Drawings of Museum's Covered South Entry Court and North East Mural Plaza



1 Backus Entry Court - PHASE I

Includes (4) Architectural Feature Structures
"Water Current" Concrete Paving w/Integratd Color
Artistic Entry Wall Features Unifying Backus to Corner Museum
Outdoor Seating Areas Featuring New Genre of Jacksonville Muralists each Month
Information Panels of Upcoming Events w/Hours of Operation
Seating for Art Classes and Outdoor Events
Entry, Sculpture w/Digital Road Sign to replace ex. Sign
Expansion of Existing Museum Exhibit Building



2 Landscape Mural Plaza - PHASE I

Featuring a 3.2 yr. Repeating Exterior Exhibit
of Florida Landscape Subjects Provided on 4' x 8' Vertical Mural Panels
Existing Court Benches to be used for Mural & River Viewing
"Water Current" Concrete Paving w/Integratd Color
Free Mural Provided for Public Use
Night Lighting for Featured Murals

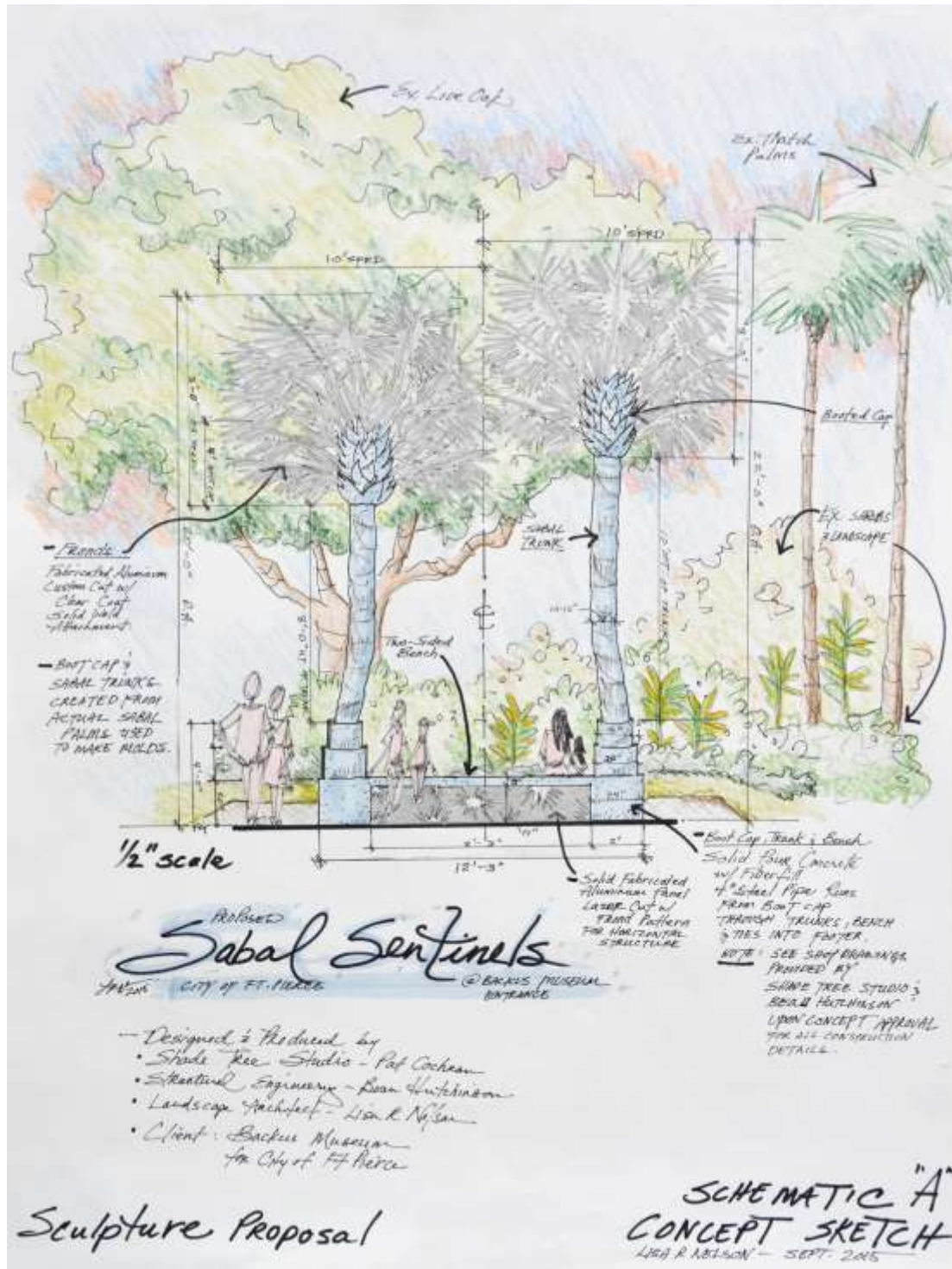


DESIGNED BY
LISA R. NELSON, RLA
Landscape & Community Planning Coordinator
DATE: MAY 31, 2011

Can't We Do Something **Big** in the Interim?

"Sabal Sentinels" a Sculpture by Pat Cochran

The Museum plans to make a significant investment in the City by installing a sculpture by artist Pat Cochran of Shadetree Studio, titled Sabal Sentinels as an addition to the already engaging sculptures throughout downtown. The two palms, constructed of cast concrete and crafted aluminum will create a landmark for the entire Veterans Park area and a place mark for creativity at the Museum's entry. In addition to the two 20 foot tall sabal palms, the sculpture will include soft up-lighting to illuminate the canopy and a bench suitable for resting and selfie photo-ops.



Why Sabal Palms and Not Royal Palms?

- The Sabal Palm was designated as the Florida's State Tree in 1970
- The Sabal Palm grows wild along the coast from North Carolina all the way south into the Caribbean.
- Sabal Palms are the trees that line the River Walk and the entrance leading into Veterans Park.
- Sabal Palms define the native coastal landscape
- Sabal Palms play an iconic role in the local coastal and inland scenes painted by A.E. Backus and the Florida Highwaymen.



Picking Fruit at Turnbull Hammock, A.E. Backus, Circa 1946



Bluster Day by A.E. Backus, Circa 1955



Sabal Palm Hammock by A.E. Backus, Circa 1958

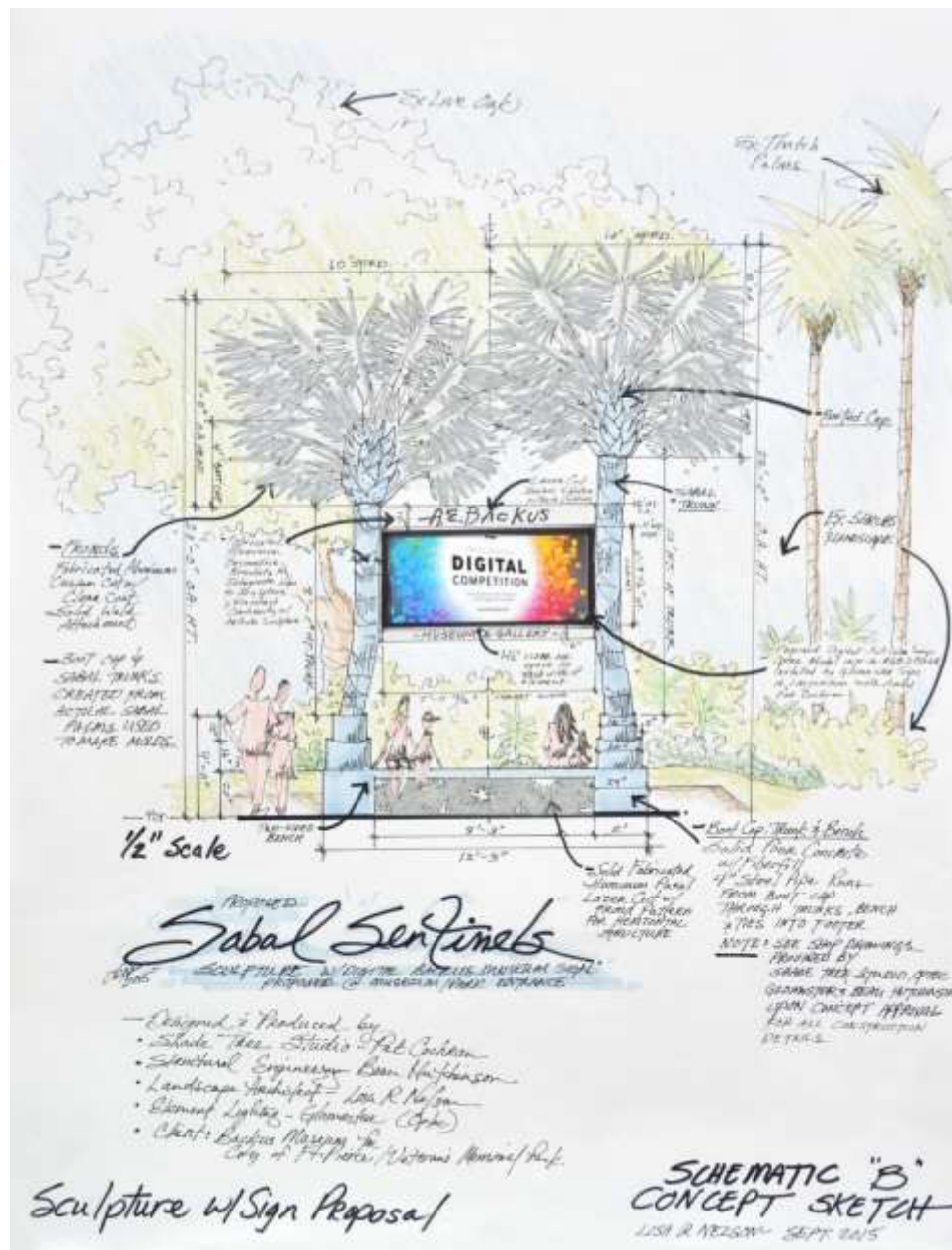


Moonlit Palms by R.A. McLendon, Dated 1978

But Wait, There's More!

**Why Not Integrate Art and Messaging to Create the Best of Both Worlds?
Let's Create Something Totally Unique and Give Them Something to Talk About.**

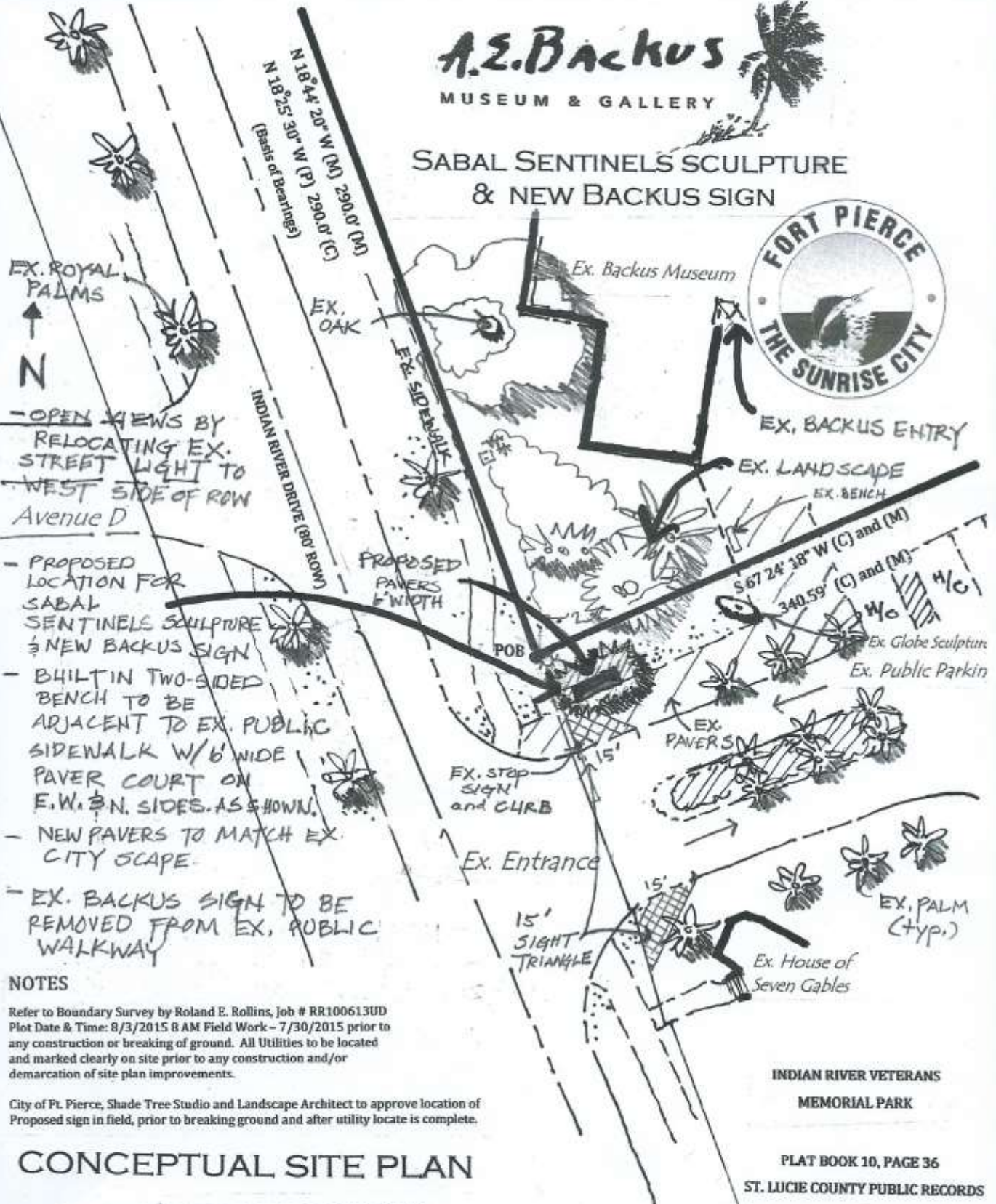
The Museum proposes to use the life size sculpture, Sabal Sentinels, to suspend a state of the art, H.D. Digital Sign, capable of displaying changing images of artwork and public messaging. This sign will be a technological step above the current digital signage found at the Museum Pointe Park or at the Fenn Center. Fully programmable, it will offer gentle transitions between images and community messages. The two combined elements will create a landmark for the Veteran's Park entrance and access to the Riverwalk promenade as well as a place mark for creativity for the Museum and for the City itself. Once installed, this unique sculpture will become a destination for residents and visitors alike. It will be totally unique and an asset to the cultural profile of the City.



A.Z. Backus

MUSEUM & GALLERY

SABAL SENTINELS SCULPTURE & NEW BACKUS SIGN



- OPEN VIEWS BY RELOCATING EX. STREET LIGHT TO WEST SIDE OF ROW Avenue D
- PROPOSED LOCATION FOR SABAL SENTINELS SCULPTURE & NEW BACKUS SIGN
- BUILT IN TWO-SIDED BENCH TO BE ADJACENT TO EX. PUBLIC SIDEWALK W/ 6' WIDE PAVER COURT ON E.W. & N. SIDES. AS SHOWN.
- NEW PAVERS TO MATCH EX. CITY SCAPE
- EX. BACKUS SIGN TO BE REMOVED FROM EX. PUBLIC WALKWAY

NOTES

Refer to Boundary Survey by Roland E. Rollins, Job # RR100613UD
Plot Date & Time: 8/3/2015 8 AM Field Work - 7/30/2015 prior to any construction or breaking of ground. All Utilities to be located and marked clearly on site prior to any construction and/or demarcation of site plan improvements.

City of Ft. Pierce, Shade Tree Studio and Landscape Architect to approve location of Proposed sign in field, prior to breaking ground and after utility locate is complete.

CONCEPTUAL SITE PLAN

LANDSCAPE ARCHITECTURAL SERVICES DONATED BY:

LISA R. NELSON, RLA
DESIGNER & ON-SITE FIELD COORDINATOR

SEPT. 2015

30 SCALE 1/8" = 1'-0"

INDIAN RIVER VETERANS
MEMORIAL PARK

PLAT BOOK 10, PAGE 36
ST. LUCIE COUNTY PUBLIC RECORDS

Specific Design Requirements for the Sabal Sentinels and the Sign Project

- Sculpture and sign placement complies with City code requiring a 15' site triangle.
- Design Requirements of the sculpture, to be compatible with the actual size of the real Sabal Palms in the park, dictates that the taller of the two trees be 22' tall. Actual palms being used to create the molds for the sculpture. The sculptures trunks will have an organic feel to them in shape and texture, featuring a naturalistic curve and irregularities. The boot will also be cast from an actual tree.



Prototype Aluminum Palm Frond; Design Phase

- Each aluminum palm frond is individually hand crafted using a laser cutter to create a natural variety of shapes and sizes. Once completed, the fronds will be securely bolted to the boot structure per engineers specifications. While firmly attached to the base, the fronds tips will still be able to flutter in the breeze.

- Placement of the digital component within the sculpture, allowing for unfettered use of the integral seating created between the two trees, leaves the project marginally out of code with a finished height of 11'. Code currently calls for a maximum sign height of 10'.
- The hand-forged aluminum frame, which secures and protects the digital screen, would have a finished height of 12'.
- Placement of the sculpture base and bench will be adjacent to the existing brick paver sidewalk to allow for unfettered 360° access for pedestrians and in compliance with ADA requirements.
- Authorizing a variance for the requested sign placement within the sculptural context supports the artistic integrity of the sculpture and allows passing motorists an unobstructed view of the sign, even if people are sitting on the bench. The proposed placement of the digital component balances the numerous design considerations presented by a project of this scope and complexity.

The Museum's mission is to promote and present arts within the community and to perpetuate the artistic and humanitarian legacy of A.E. "Bean" Backus.

